



# VIV GLASS SKIMMER

VIV GLASS SKIMMER IS AN ULTRA-SMALL PROTEIN SKIMMER MADE OF GLASS. IT CAN EFFICIENTLY REMOVE THE PROTEINS AND FINE DUST IN THE SEAWATER, AND STABILIZE THE WATER QUALITY TO REDUCE THE NUMBER OF TIMES OF WATER CHANGES AND CLEANING.

THANK YOU VERY MUCH FOR CHOOSING "VIV GLASS SKIMMER" THIS PRODUCT HAS BEEN CAREFULLY FINISHED BY HANDWORKS.

\*PLEASE READ THIS INSTRUCTION CAREFULLY, AND USE THE DEVICE CORRECTLY.

www.viv.com.hk

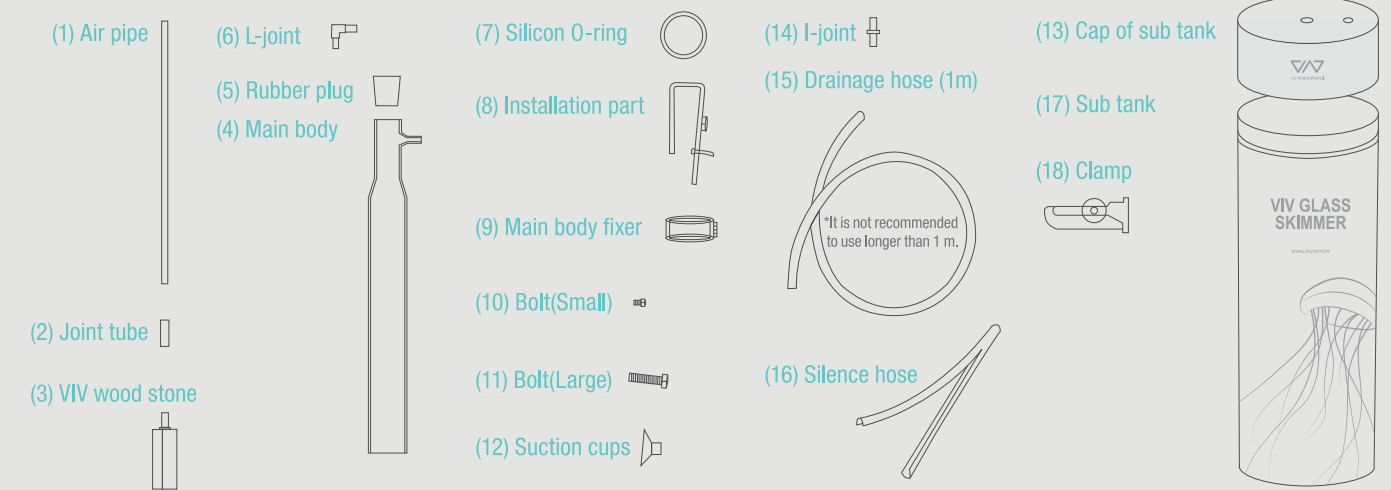
VIV (INTERNATIONAL) CORPORATION LIMITED

- It saves spaces with a compact design, and removes the stains without drying.
- It is able to drain out the removed dirt to the sub-tank (external tank) to prevent dirt accumulated in the main body. In addition, it will reduce the number of times to abandon the dirt in the large sub-tank.
- The main body is high quality because of the high purity glass, making it easier to be cleaned and also stronger to degradation.
- It is very quiet because of its silencing mechanism.
- Bacteria will be activated by the Eareshiyon effect.
- For there is no scattering of the foam, so the water tank is free from the pollution of salty dirt.
- It can be adjusted freely to adapt to any height to fit the aquarium (it can be installed to a depth of 20cm water tank as well).
- It can be easily installation without getting hands wet.
- The air tube and air pump (2L per minute or more is recommended) are not included in the set.
  - \*It is possible to use 1.2L per minute if there is a stable air pump.
  - \*In the case of air amount adjusting pump, please use the attached clamp to adjust the output to the maximum.
  - \*There is a case where the amount of foam is reduced when using the anti-reflux valve. Please increase the pump capacity that case.
- It supports to the 130L total water amount at maximum (Less than half the total amount of water if you want to use the Berlin method).
- It supports the aquarium edge to 2.2 cm. \* It is possible to support a wider aquarium edge by changing the mounting part (optional).
- Please set up a sub-tank below the drainage mouth of the main body (attached sub-tank height: 28cm).

## Maintenance

- The main body of viv glass skimmer
  - In the case cleaning, please use the brush or a soft cloth to clean the dust under running water.
  - For the main body is made of glass, it is weak to the impact. Hence, please carry out the cleaning in the safe places, such as plastic bucket.
- Drainage hose
  - In the main body, it does not have much effect on the function when attached some extent moss or dirt, but once the dirt accumulates in the drainage hose, it would result in difficulty of drainage.
  - Therefore, please exchange the parts or drop the dirt.
- VIV wood stone (made of ecological wood)
  - After cleaning the moss or dirt with brush, the VIV wood stone can be used again.
  - Please replace If it no longer produce fine bubbles.
  - (The cleaning ability reduces when the bubble becomes bigger than 3 mm of the diameter)
  - For it is made of natural wood, there is a rare chance to find a weak bubble productivity.
  - In that case, please dry out the wood stone before put it back to use. Or, you can cut a thin slice at the surface where bubble should be comes out. Those steps can help the wood stone to work properly.

## Set content (18 of them)



## Installation

1

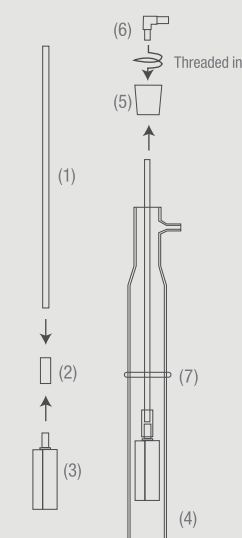
Please connect the (1) air pipe and (3) VIV wood stone with the (2) joint tube.

And then, put it into the (4) main body (glass bottle) from the bottom and make it go into the (5) rubber plug about 1-3rd.

Thread the root of the (6) L-joint completely into (5) rubber plug. If you just put the L-joint into the rubber plug without threading, then the L-joint would escape easily from the plug when the plug is pushed into the main body.

(5) The plug must pushed hardly into the (4) main body.

Put on the (7) silicon O-ring onto the installed main body at the position showed in figure.



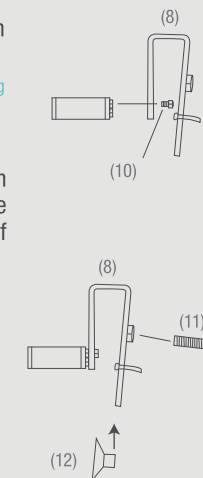
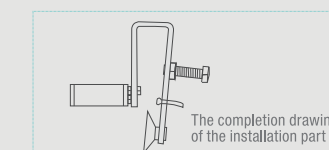
2

Use (10) bolt(small) to fix the (9) main body fixer onto the (8) installation part.

\*Please do not use too much strength on threading the bolt.

\*Please be careful not to lose the bolt.

Put on the (11) bolt(large) and (12) suction cup onto the (8) installation part as the way shown in the completion drawing of the installation part.



### <Caution>

•VIV is no responsible for the compensation to the death of organism and aquatic plants and seaweed, staining of interior and furniture, the secondary damage and breakage of equipment, resulting in unreusable utensils (the bottom floor and live rock, fertilizer, etc.) due to incorrect use, leakage, etc.. # The breaking of the sharp part of the component may cause injury. •It is very dangerous to throw, swallow or hit with the components, please do keep the components securely. •In the case cleaning, please use the brush or a soft cloth to clean the dust under running water. Other method may cause the breakage of the product, resulting in injury. •Even as there is obvious scratch due to the shipment and transportation, it cannot be returned or exchanged once the product is used. Hence, please check thoroughly before installation. •For the improvement, here may be change in design or specifications without notice.

○Our responsibility to actual losses of customers as a result of the use or non-usable of this product, whether the cause may be any, the amount of money paid by the customer at the time of purchasing this product, would be as the compensation price limit of this product. However, this does not apply in cases of our intentional or gross negligence. ○The scope of our guarantee is assumed to be carried out by one of the following methods by the will of us. However, this does not apply in cases of our intentional or gross negligence.

•We shall refund the customer with the price of the purchased product according to the receipts, invoice or other documentaries that has been described in writing document, certifying the price and the purchasing action of the product.

•Exchange of the product.

### <Trademark>

This product is limited for only personal use. The replication, commercial use, sale to a third party, transfer, rental, area distribution in any form for part or all without prior consent of the product, are forbidden.

# VIV GLASS SKIMMER

V I V B E T T E R L I F E

### <About Support>

VIV (INTERNATIONAL) CORPORATION LIMITED HO KING COMM CTR,2-16 FAYUEN ST,MONGKOK KOWLOON,HONG KONG

E-Mail: nianlun2010@gmail.com Website: www.viv.com.hk

## Continuing on the Installation

3

Set up the installation part completed in 2 onto the edge of aquarium with the suction cup as shown in the figure.

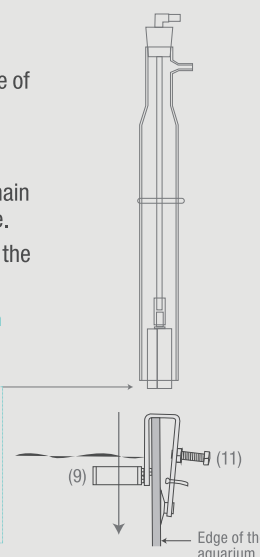
\*At this moment, if you use too much strength on pull up the (9) main body fixer from the installation, it could be broken.

Once the installation part is fixed, please put in the main body into the (9) main body fixer as shown in the figure.

The angle of main body can be adjusted through using the (11) bolt (large).

\*If you cannot adjust the angle properly, then move up the installation part from the edge about 2-3cm or more.

The VIV wood stone needs to have about 5mm-10mm of its body part out of the bottom of the main body. \*The limit is that not to let out the bubble from the bottom of main body.  
(Once the wood stone absorb the water from the bottom of the main body, it would become more efficient.)



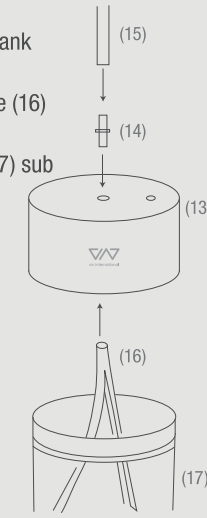
4

Put in the (14) I-joint into the (13) sub tank cap.

Connect the (15) drainage hose and the (16) silencing hose.

Put on the completed parts onto the (17) sub tank.

\*The silencing hose is for removing the dripping sound of sewage. It works only when there is no overflowing sewage from the sub-tank.



5

Keep the constricted thick part of the main body of VIV skimmer above the water surface about 7cm. The height of the main body can be adjusted through the (7) silicon O-ring.

Next, when you decide the location of the sub tank, cut the extra part of the (15) drainage hose. And then connect it to the drainage mouth of the main body.

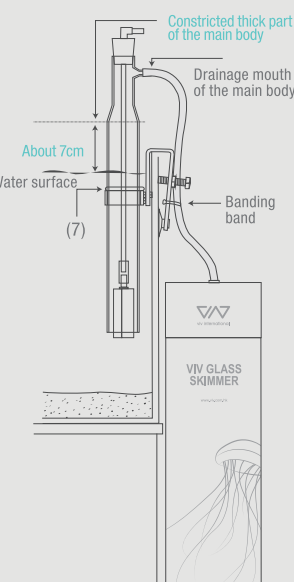
(You can also use the banding band to band it together.)

\*The drainage mouth of the main body may be cracked when getting too much force.

\*Do not slack the drainage hose.

The slacking part may accumulate water, resulting in unstable action.

\*Do not use drainage hose with length longer than 1m.



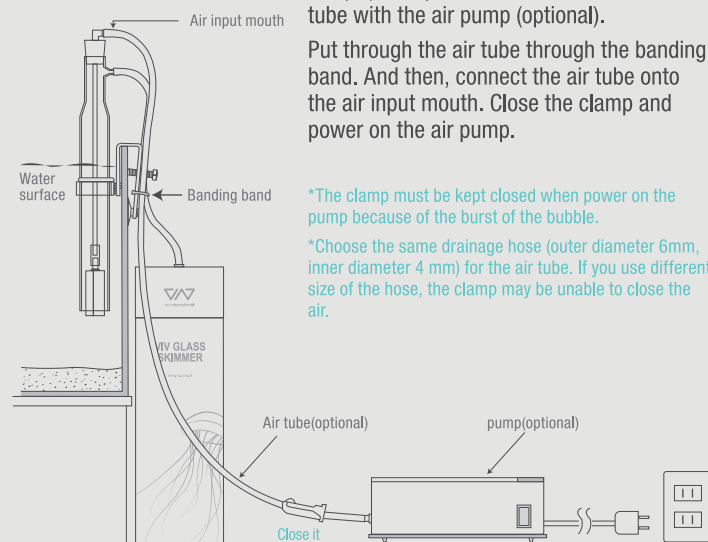
6

Put through the air tube (optional) through the (18) clamp. And then, connect the air tube with the air pump (optional).

Put through the air tube through the banding band. And then, connect the air tube onto the air input mouth. Close the clamp and power on the air pump.

\*The clamp must be kept closed when power on the pump because of the burst of the bubble.

\*Choose the same drainage hose (outer diameter 6mm, inner diameter 4 mm) for the air tube. If you use different size of the hose, the clamp may be unable to close the air.



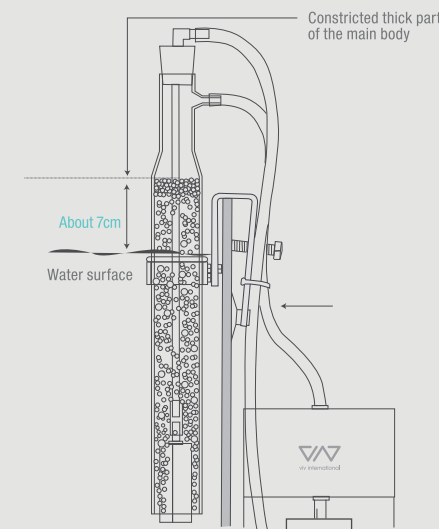
7

Loosen the (18) clamp gradually until the bubble goes up to the top of constricted thick part of the main body.

\*Do not let the bubble raised above the top of the constricted thick part of the main body.

It is the completion of the installation.

\*For the case of the transparent water is drained out or adjustment of the bubble is too difficult, please lessen the bubble to make the bubble stay below the top of the constricted thick part of the main body.



8

The dirty bubble would go into the sub tank within about half of a day.

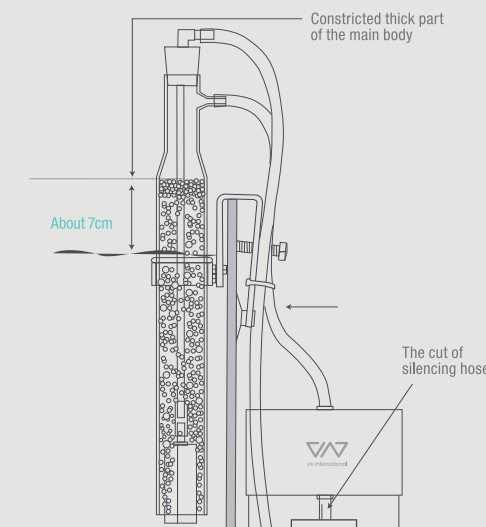
If the breeding water is polluted, the sub tank would accumulate about 1cm of the sewage within 1 day.

\*In that case, the water accumulated in the drainage hose may draw down the hose, resulting in the bubble in the main body becoming destabilizing.

\*If the sewage is accumulated at the cut of the silencing hose, the draining speed would become slow. It prevents the overflowing.

\*Once the breeding water become clean, the amount of the dirt cleanliness would reduce.

\*The bubble would move up and down during the sewage draining.



### <Q & A>

Q: There is no foam.

A: There may be not enough power of the air pump. Or, there is a possibility that the small holes on the surface of the new VIV wood stone (natural wood) are stuck. (You can dry the VIV wood stone. Or, you can scrape a piece of thin skin. In that way, it might normally let the bubbles come out. If it is still useless, please contact us.)

Q: I cannot stabilize the location of the bubble.

A: There is no problem as long as it is during the draining of sewage. If you find it frequently draining out the water, please lower the position of the bubble by increasing the body or squeeze the air amount.

Please cut the extra part if you find there is a slack in the discharge hose as water accumulates.

Q: The foam comes out in large quantities from the bottom of the main body.

A: The drainage mouth or the drainage hose may be the cause. Please keep the air pass through well.

Q: There is moss occurred in the main body.

A: Moss occurs when the dirt is drained out. There may be moss occurs than usual when the light is too strong.

Q: The foam is weak.

A: Please increase the amount of air by raising the main body position.

Q: The amount of drainage sewage is decreased.